

STANDARD ARRIVAL CHART —
INSTRUMENT (STAR) — ICAO

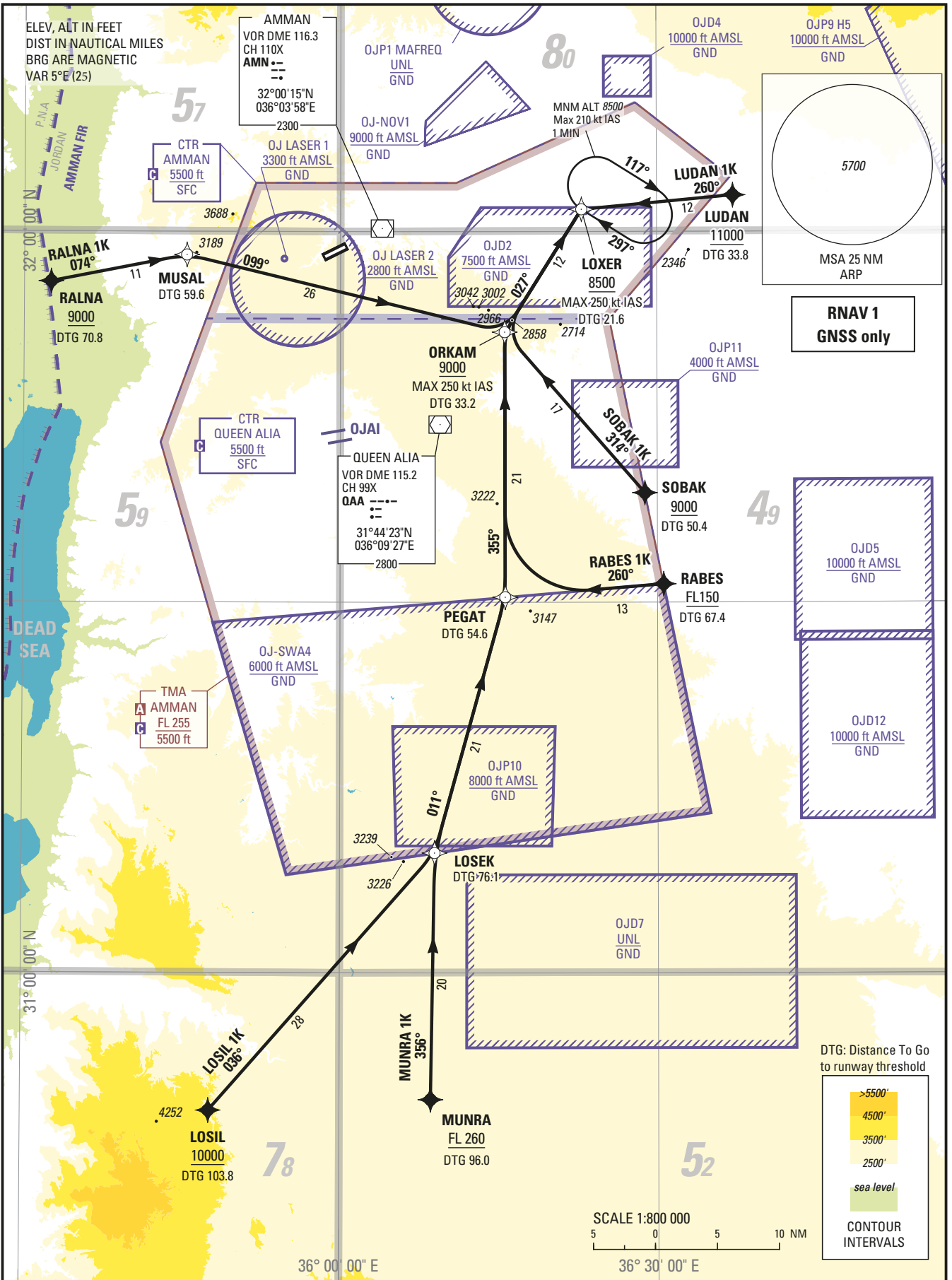
TRANSITION LEVEL
FL 150

TRANSITION ALTITUDE
13000 ft

APP 128.9
TWR 118.1

AMMAN/Amman City Airport(OJAM)
RNAV RWY 24

SOBAK 1K RABES 1K LOSIL 1K
LUDAN 1K MUNRA 1K RALNA 1K



ARRIVAL TEXTS for RNAV STAR RWY24

STAR RALNA 1K

From RALNA at or above 9000 FT to MUSAL to ORKAM at or above 9000 FT and maximum 250 KIAS to LOXER (IAF) at or above 8500 FT and maximum 250 KIAS.

STAR LUDAN 1K

From LUDAN at or above 11000 FT to LOXER (IAF) at or above 8500 FT and maximum 250 KIAS.

STAR SOBAK1K

From SOBAK at or above 9000 FT to ORKAM at or above 9000 FT and maximum 250 KIAS to LOXER (IAF) at or above 8500 FT and maximum 250 KIAS.

STAR RABES1K

From RABES at or above FL 150 to PEGAT to ORKAM at or above 9000 FT and maximum 250 KIAS to LOXER (IAF) at or above 8500 FT and maximum 250 KIAS.

STAR LOSIL 1K

From LOSIL at or above 10000 FT to LOSEK to PEGAT to ORKAM at or above 9000 FT and maximum 250 KIAS to LOXER (IAF) at or above 8500 FT and maximum 250 KIAS.

STAR MUNRA 1K

From MUNRA at or above FL 260 to LOSEK to PEGAT to ORKAM at or above 9000 FT and maximum 250 KIAS to LOXER (IAF) at or above 8500 FT and maximum 250 KIAS.

Holding instruction

Path Descriptor	Waypoint Identifier	Inbound Course °M (°T)	Leg Distance	Turn direction	Minimum Altitude (ft/FL)	Maximum Altitude (ft/FL)	Speed Limit (kt)	Magnetic Variation	Navigation Specification
Hold	LOXER	297 (302.0)	1 min	R	8500	14000	210	+5.0	RNAV 1

Route Description: RNAV STAR RWY24

STAR RALNA 1K											
Serial Number	Path Descriptor	Waypoint Identifier	Fly - Over	Course °M (°T)	Magnetic Variation	Distance (NM)	Turn direction	Altitude (ft/FL)	MAX IAS (kt)	VPA/TCH (°/ft)	Navigation Accuracy (NM)
10	IF	RALNA	-	-	-	-	-	+9000	-	-	RNAV 1
20	TF	MUSAL	-	074 (078.8)	+5.0	11.2	-	-	-	-	RNAV 1
30	TF	ORKAM	-	099 (103.5)	+5.0	26.4	-	+9000	-250	-	RNAV 1
40	TF	LOXER	-	027 (032.0)	+5.0	11.7	-	+8500	-250	-	RNAV 1
STAR LUDAN 1K											
Serial Number	Path Descriptor	Waypoint Identifier	Fly - Over	Course °M (°T)	Magnetic Variation	Distance (NM)	Turn direction	Altitude (ft/FL)	MAX IAS (kt)	VPA/TCH (°/ft)	Navigation Accuracy (NM)
10	IF	LUDAN	-	-	-	-	-	+11000	-	-	RNAV 1
20	TF	LOXER	-	260 (264.7)	+5.0	12.3	-	+8500	-250	-	RNAV 1
STAR SOBAK 1K											
Serial Number	Path Descriptor	Waypoint Identifier	Fly - Over	Course °M (°T)	Magnetic Variation	Distance (NM)	Turn direction	Altitude (ft/FL)	MAX IAS (kt)	VPA/TCH (°/ft)	Navigation Accuracy (NM)
10	IF	SOBAK	-	-	-	-	-	+9000	-	-	RNAV 1
20	TF	ORKAM	-	314 (319.0)	+5.0	17.2	-	+9000	-250	-	RNAV 1
30	TF	LOXER	-	027 (032.0)	+5.0	11.7	-	+8500	-250	-	RNAV 1
STAR RABES 1K											
Serial Number	Path Descriptor	Waypoint Identifier	Fly - Over	Course °M (°T)	Magnetic Variation	Distance (NM)	Turn direction	Altitude (ft/FL)	MAX IAS (kt)	VPA/TCH (°/ft)	Navigation Accuracy (NM)
10	IF	RABES	-	-	-	-	-	+FL150	-	-	RNAV 1
20	TF	PEGAT	-	260 (265.0)	+5.0	12.8	-	-	-	-	RNAV 1
30	TF	ORKAM	-	314 (319.0)	+5.0	17.2	-	+9000	-250	-	RNAV 1
40	TF	LOXER	-	027 (032.0)	+5.0	11.7	-	+8500	-	-	RNAV 1

STAR MUNRA 1K											
Serial Number	Path Descriptor	Waypoint Identifier	Fly - Over	Course °M (°T)	Magnetic Variation	Distance (NM)	Turn direction	Altitude (ft/FL)	MAX IAS (kt)	VPA/TCH (°/ft)	Navigation Accuracy (NM)
10	IF	MUNRA	-	-	-	-	-	+FL260	-	-	RNAV 1
20	TF	LOSEK	-	356 (000.9)	+5.0	19.9	-	-	-	-	RNAV 1
30	TF	PEGAT	-	011 (015.4)	+5.0	21.4	-	-	-	-	RNAV 1
40	TF	ORKAM	-	355 (359.9)	+5.0	21.4	-	+9000	-250	-	RNAV 1
50	TF	LOXER	-	027 (032.0)	+5.0	11.7	-	+8500	-250	-	RNAV 1

STAR LOSIL 1K											
Serial Number	Path Descriptor	Waypoint Identifier	Fly - Over	Course °M (°T)	Magnetic Variation	Distance (NM)	Turn direction	Altitude (ft/FL)	MAX IAS (kt)	VPA/TCH (°/ft)	Navigation Accuracy (NM)
10	IF	LOSIL	-	-	-	-	-	+10000		-	RNAV 1
20	TF	LOSEK	-	036 (041.2)	+5.0	27.7	-	-		-	RNAV 1
30	TF	PEGAT	-	011 (015.4)	+5.0	21.4	-	-		-	RNAV 1
40	TF	ORKAM	-	355 (359.9)	+5.0	21.4	-	+9000	-250	-	RNAV 1
50	TF	LOXER	-	027 (032.0)	+5.0	11.7	-	+8500	-250	-	RNAV 1

Aeronautical Data Tabulation: RNAV STAR RWY24

WAYPOINT LIST					
Waypoint / Fix	Latitude	Longitude	Waypoint / Fix	Latitude	Longitude
SOBAK	31°38'51.600"N	036°28'49.710"E	LOSEK	31°09'42.220"N	036°08'56.800"E
ORKAM	31°51'51.690"N	036°15'34.174"E	LUDAN	32°02'56.600"N	036°37'13.290"E
LOXER	32°01'47.760"N	036°22'51.460"E	MUNRA	30°49'44.290"N	036°08'34.880"E
RABES	31°31'29.090"N	036°30'35.113"E	RALNA	31°55'57.000"N	035°32'33.000"E
PEGAT	31°30'24.497"N	036°15'36.734"E	MUSAL	31°58'06.720"N	035°45'25.610"E
LOSIL	30°48'51.200"N	035°47'41.310"E			

